

General Fund Operating Budget

Relating Financial and Non-Financial Data

Fiscal Years 1986/87 through 2002/2003

List of Exhibits

	<i>Title</i>	<i>Page Number</i>
<i>Figure A</i>	General Fund, Sources of Funds	1
<i>Figure B</i>	General Fund, Expenditure Relationships	2
<i>Figure C</i>	General Fund, Expenditure Relationships: Selected Ratios	3
<i>Figure D</i>	General Fund, Utilities Expenditures	4
<i>Figure E</i>	Student Enrollments and Average Unit Loads	5
	General Fund: "Production Function" Components, Rood Data Series for All Charts	6

Figure A

Cal Poly, San Luis Obispo

General Fund, Sources of Funds

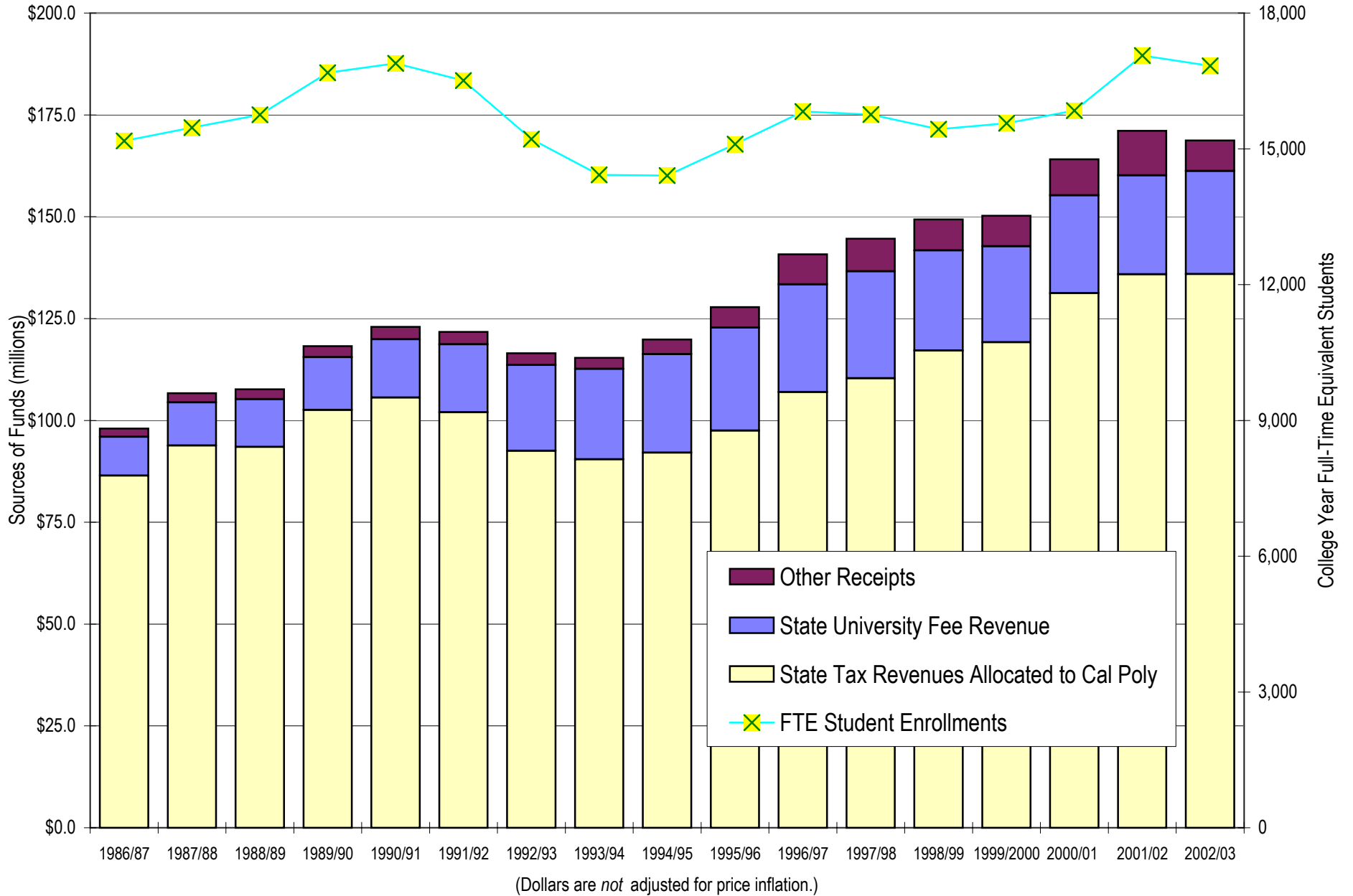
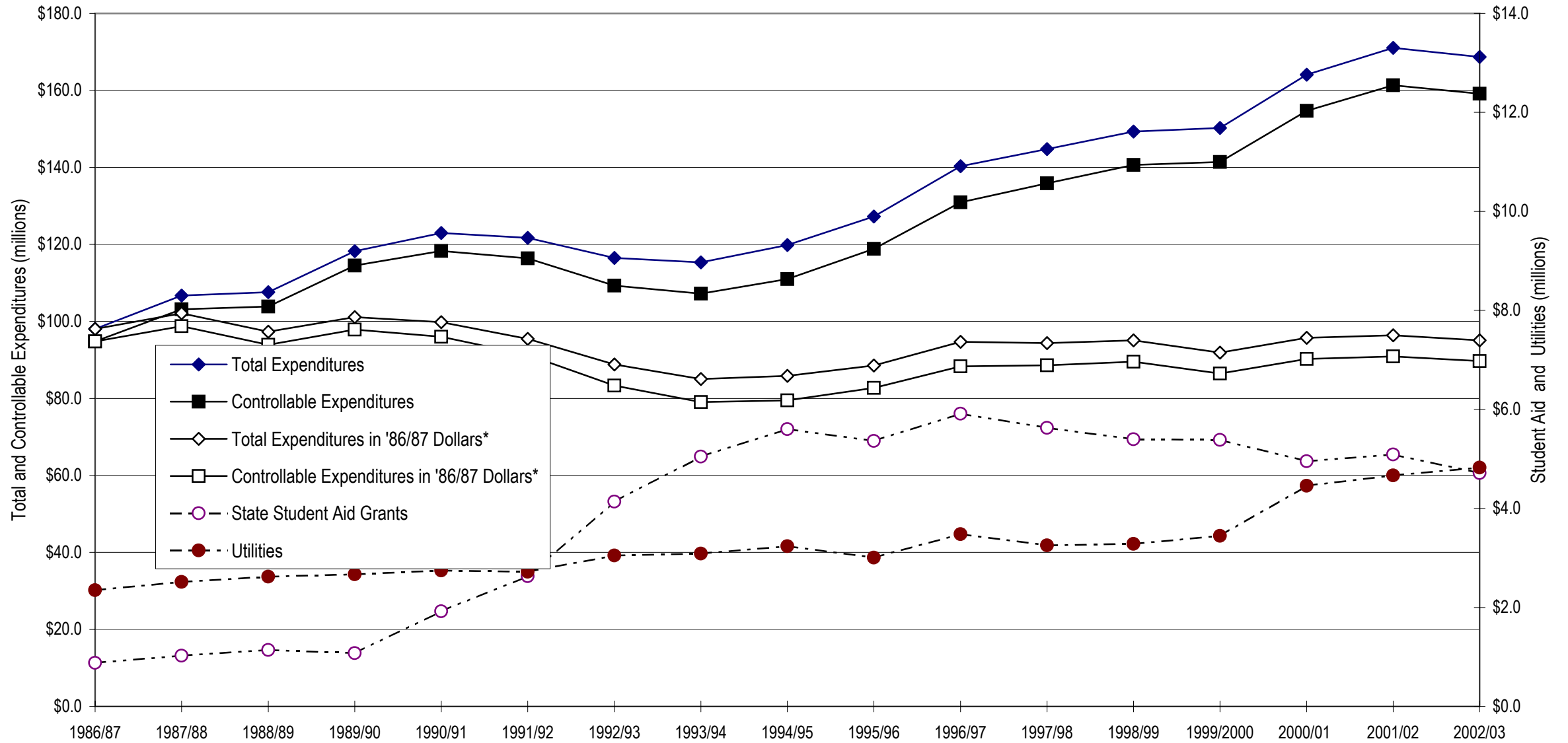


Figure B

Cal Poly, San Luis Obispo

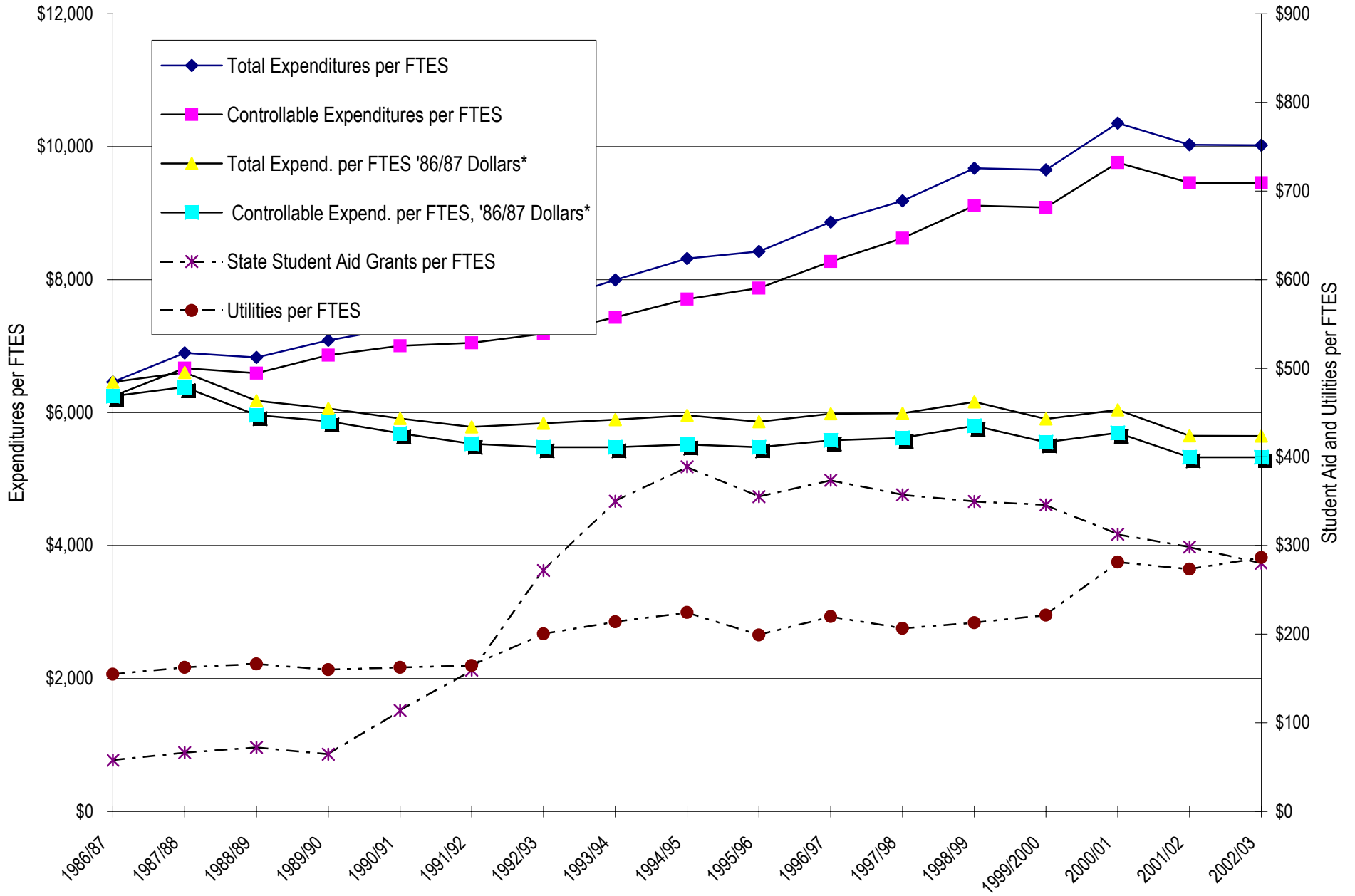
General Fund, Expenditure Relationships



* Higher Education Price Index (HEPI), 1986/87 = 100

Figure C

General Fund, Expenditure Relationships: Selected Ratios



*Higher Education Price Index (HEPI), 1986/87 = 100

General Fund, Utilities Expenditures

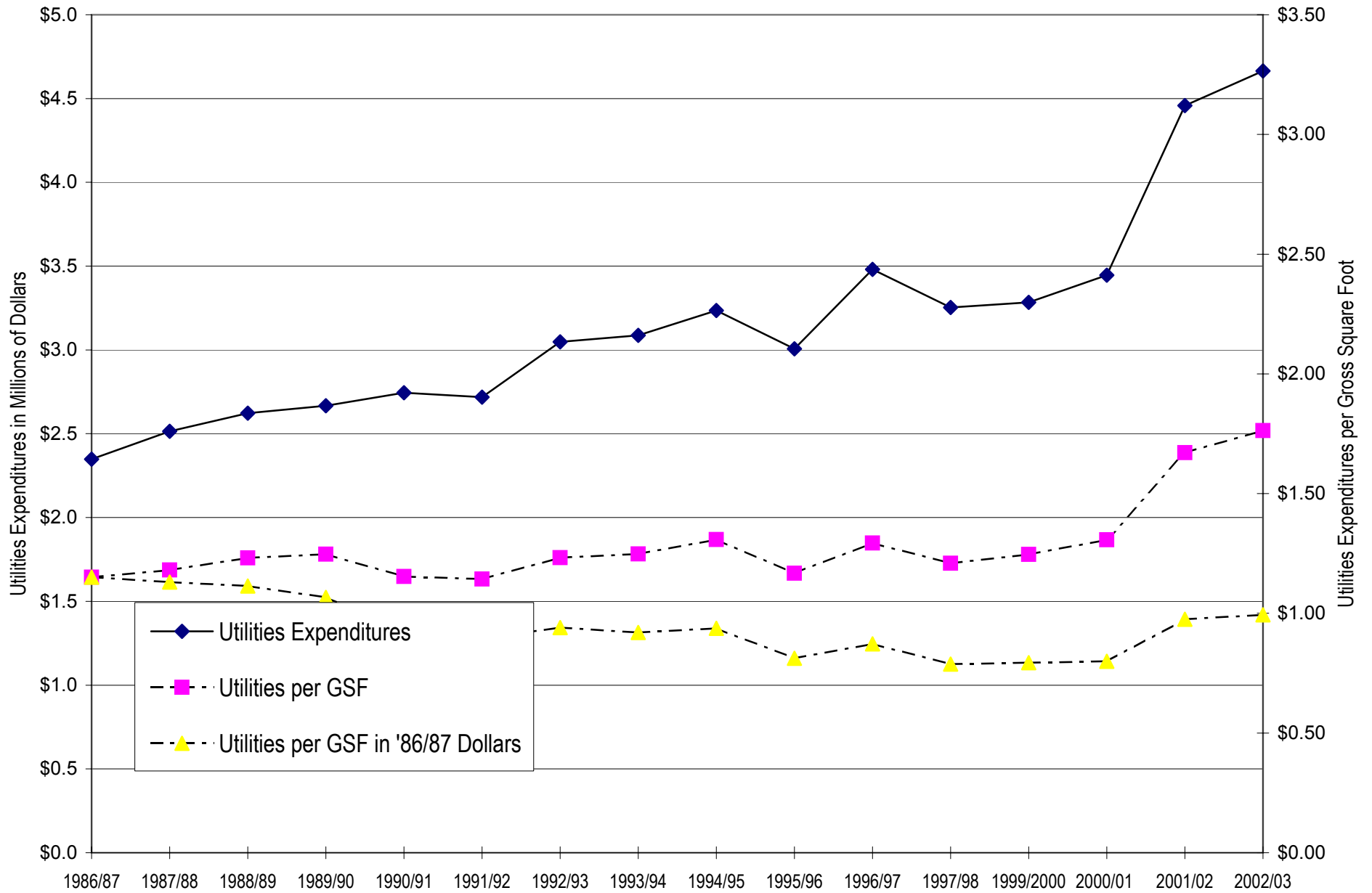
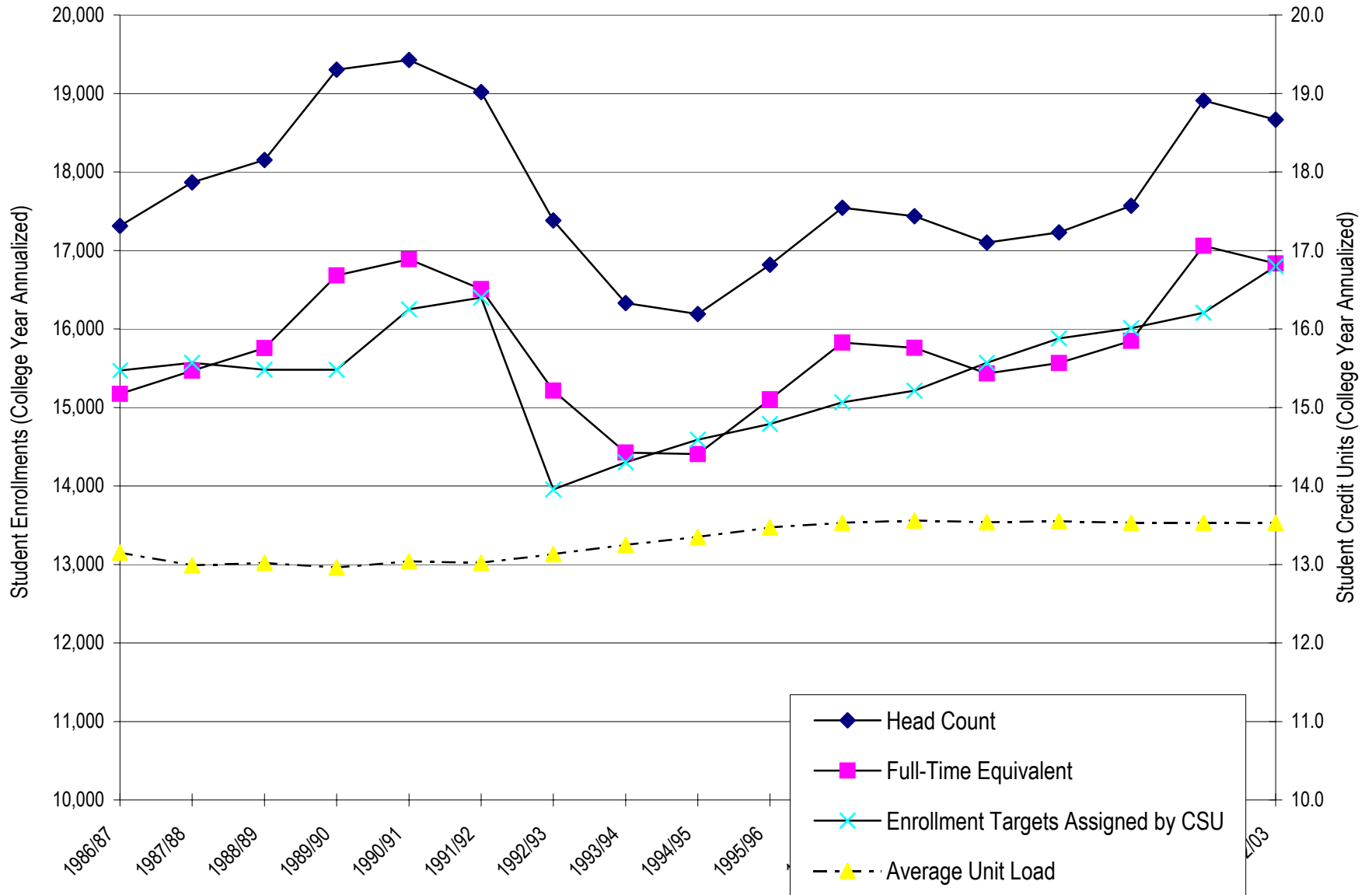


Figure E

Cal Poly, San Luis Obispo

Student Enrollments and Average Unit Loads



Cal Poly, San Luis Obispo

GENERAL FUND: "PRODUCTION FUNCTION" COMPONENTS

Root Data Series for All Charts

Fiscal Year	Financial Components						Student Enrollments				Price Inflation		Physical Space		
	Total Expenditures	State University Fee Revenue	Other Receipts	State Tax Revenues Allocated to Cal Poly	State Student Aid Grants	Utilities	College-Year Annualized Headcount	College-Year Annualized FTES	Coll Yr Average Student Credit Unit Load	CY FTES Targets Assigned by CSU	Higher Education Price Index	Consumer Price Index	Total Gross Square Footage	Non-General Fund	General Fund GSF
1986/87	\$98,015,366	\$9,478,866	\$2,065,656	\$86,470,844	\$879,465	\$2,348,283	17,313	15,174	13.15	15,470	120.4	113.3	2,723,880	682,712	2,041,168
1987/88	\$106,703,186	\$10,552,734	\$2,301,286	\$93,849,166	\$1,026,792	\$2,514,184	17,868	15,468	12.99	15,570	125.8	118.0	2,780,378	651,526	2,128,852
1988/89	\$107,613,520	\$11,725,389	\$2,373,779	\$93,514,352	\$1,140,419	\$2,622,118	18,153	15,755	13.02	15,480	133.1	123.5	2,786,660	657,808	2,128,852
1989/90	\$118,232,669	\$12,933,519	\$2,706,977	\$102,592,173	\$1,076,009	\$2,667,567	19,302	16,683	12.96	15,480	140.8	129.4	2,820,462	681,394	2,139,068
1990/91	\$122,946,095	\$14,284,328	\$3,037,473	\$105,624,294	\$1,921,869	\$2,744,843	19,425	16,887	13.04	16,250	148.3	136.4	3,087,913	709,358	2,378,555
1991/92	\$121,714,690	\$16,678,004	\$3,015,032	\$102,021,655	\$2,629,782	\$2,718,699	19,016	16,507	13.02	16,400	153.5	140.8	3,072,973	694,958	2,378,015
1992/93	\$116,498,654	\$21,103,560	\$2,867,938	\$92,527,156	\$4,136,487	\$3,048,851	17,383	15,215	13.13	13,957	157.9	145.2	3,209,861	736,738	2,473,123
1993/94	\$115,332,474	\$22,193,969	\$2,669,935	\$90,468,570	\$5,048,480	\$3,086,833	16,330	14,424	13.25	14,300	163.3	148.8	3,209,861	736,738	2,473,123
1994/95	\$119,852,156	\$24,187,775	\$3,570,574	\$92,092,630	\$5,600,110	\$3,235,009	16,189	14,407	13.35	14,589	168.1	153.2	3,209,861	736,738	2,473,123
1995/96	\$127,242,036	\$25,268,284	\$5,035,392	\$97,506,497	\$5,362,360	\$3,007,064	16,818	15,102	13.47	14,789	173.0	157.4	3,294,153	717,145	2,577,008
1996/97	\$140,298,157	\$26,418,970	\$7,387,061	\$106,983,703	\$5,913,128	\$3,480,555	17,543	15,825	13.53	15,064	178.4	161.9	3,409,809	717,956	2,691,853
1997/98	\$144,760,786	\$26,260,838	\$8,005,325	\$110,353,699	\$5,628,095	\$3,253,296	17,435	15,759	13.56	15,214	184.7	164.8	3,414,009	722,156	2,691,853
1998/99	\$149,313,994	\$24,610,553	\$7,570,041	\$117,133,400	\$5,395,528	\$3,283,796	17,099	15,432	13.54	15,569	189.1	166.6	3,387,313	751,949	2,635,364
1999/00	\$150,243,998	\$23,577,418	\$7,492,640	\$119,173,940	\$5,383,758	\$3,445,510	17,231	15,565	13.55	15,879	196.9	172.5	3,387,313	751,949	2,635,364
2000/01	\$164,094,767	\$23,961,752	\$8,862,346	\$131,270,669	\$4,953,728	\$4,457,504	17,569	15,847	13.53	16,010	206.4	178.2	3,378,964	711,643	2,667,321
2001/02	\$171,073,178	\$24,282,704	\$10,907,236	\$135,883,238	\$5,089,311	\$4,665,080	18,911	17,060	13.53	16,205	213.6	181.0	3,386,367	740,241	2,646,126
2002/03 est.	\$168,696,494	\$25,300,705	\$7,457,589	\$135,938,200	\$4,714,337	\$4,823,059	18,667	16,833	13.53	16,800	213.6	181.0	3,386,367	740,241	2,646,126
Notes and Footnotes:															
Data reflect actual experience except where otherwise noted.															
Data are exclusive of the Independent Operations Program (reimbursed operations).															
Effective FY 1996/97, in addition to SUG and SEOP grants, the "State Student Aid Grants" includes Cal Poly Grants (in accordance with CSU campus-based fee requirements).															